



THOMAS COLE NATIONAL HISTORIC SITE



Fall 2021 Newsletter

20TH ANNIVERSARY YEAR



Cross Pollination installation in the New Studio Photo © Peter Aaron/OTTO

CROSS POLLINATION SHOW TRAVELS

The Thomas Cole National Historic Site has established a track record of organizing groundbreaking exhibitions and traveling them around the country. This year, the Thomas Cole Site partnered with Frederic Church's Olana here in New York's Hudson Valley, and the Crystal Bridges Museum of American Art in Arkansas, to create the exhibition *Cross Pollination: Heade, Cole, Church and Our Contemporary Moment*. The collaborative project explored the theme of "pollination" in nature and ecology, as well as pollination as a metaphor for the interplay of art and science, and relationships among artists across centuries, from the 19th to the 21st. The project was presented at a total of five national venues: Thomas Cole National Historic Site, The Olana Partnership at Olana State Historic Site, Cummer Museum of Art & Gardens, Reynolda House Museum of American Art, and Crystal Bridges Museum of American Art. It built upon our successful collaborative exhibition, *River Crossings: Contemporary Art Comes Home* presented by the Thomas Cole Site and Olana in 2015.

Cross Pollination was presented as one simultaneous exhibition across both the Thomas Cole Site and Olana from June 12 through October 31, 2021,

continued on page 6



Photo by Escape Brooklyn

SITE NAMED NATIONAL MEDAL FINALIST

The Thomas Cole National Historic Site opened to the public in 2001 following a restoration of the Main House, and 2021 marks the 20th anniversary. Coinciding with the anniversary, the Thomas Cole Site was named a 2021 National Medal Finalist, as one of just fifteen museums across the country to be honored by the Institute of Museum and Library Services (IMLS), Washington, DC. The Thomas Cole Site was nominated for the National Medal by U.S. Representative Antonio Delgado, who kicked off a social media celebration with the @thomas-colesite and the IMLS. Representative Delgado and community members "shared their story" of the Thomas Cole Site in personal videos on our YouTube channel and Instagram.

A new Economic Impact report on 2019 statistics at the Thomas Cole Site found that the total value added impact of the organization on the Capital Region is \$2,854,525, and that the site is an essential economic pillar for Greene County. The Thomas Cole Site was recognized with official anniversary proclamations from both Greene and Columbia County with special thanks to Legislator Matt Luvera, Greene County Legislature, and Assemblymember Didi Barrett, Assembly District 106.

continued on page 6

THANK YOU Major support for the Thomas Cole Site programs and operations is provided by the Henry Luce Foundation, U.S. Small Business Administration, National Park Service, the New York State Council on the Arts with the support of the Office of the Governor and the New York State Legislature, The Bay & Paul Foundations, Enoch Foundation, Empire State Development's I LOVE NEW YORK program under the Market NY initiative, The Manitou Fund, Art Bridges Bridge Ahead Initiative, Brown Foundation, a Humanities New York SHARP Grant with support from the National Endowment for the Humanities and the federal American Rescue Plan, The Educational Foundation of America, The J. M. Kaplan Fund, Tianaderrah Foundation, and the Kindred Spirits Society of the Thomas Cole National Historic Site.

SITE JOINS POLLINATOR PATHWAY

The Thomas Cole National Historic Site continued its Greening Initiative this year, taking actions to become a more environmentally sustainable organization in keeping with Cole's early environmentalist values. All of the historic buildings on campus now source solar electricity from a local business.

As part of our Greening Initiative and in conjunction with the exhibition, *Cross Pollination*, the Thomas Cole Site officially joined "The Pollinator Pathway." The Pathway is a group of international public and private properties that together offer pesticide-free corridors of native plants that provide nutrition and habitat for pollinators. To receive this designation, the properties do not use pesticides



Paula Hayes' sculpture *Bird Nesting House and Tree* on the grounds

and herbicides and mow higher and less often to support pollinator habitats. Previous Greening actions, such as installing an electric car charger, can be found at thomascole.org/greening.

NEW COLE PAINTING GIFTED

We are thrilled to announce a new Thomas Cole painting gift to the collection from Michael Altman Fine Art & Advisory Services. The painting, entitled, *Jerusalem*, exemplifies the influence of the "sublime" landscape tradition in Cole's work.

The collection of the Thomas Cole National Historic Site includes over six hundred objects and two research archives. Michael Altman's gift of *Jerusalem* is the latest in a series of major gifts of artwork to the Thomas Cole Site's permanent collec-



Thomas Cole, *Jerusalem*, n.d., oil on board, 5x7 in., Thomas Cole National Historic Site, Gift of Michael Altman Fine Art & Advisory Service, LLC

tion. Previously, Susan G. A. Warner gifted Thomas Cole's *Hunters in a Landscape*, David and Laura Grey gifted Thomas Cole's *Tower by Moonlight*, and Richard Sharp gifted Thomas Cole's *Ruined Castle on a Rock, Reflection*, and *Catskill Mountain Landscape*, as well as the artist's original guitar and case. Thank you to all of our generous donors to the collection over the years.

With support from the Henry Luce Foundation, our curatorial team brought a selection of collection highlights and related research into the digital space at thomascole.org/collection, making it accessible to broad audiences and scholars online for the first time. The collection highlights include paintings by Thomas Cole as well as Sarah Cole, his sister, and Emily Cole, his daughter, who both worked as professional artists in the 19th century. Additional highlights include Thomas Cole's easel and the Bible that belonged to Maria Bartow Cole, his wife. Don't miss a mysterious Valentine letter from the collection addressed to Harriet Bartow, Maria's sister.

The digital collection highlights were made possible by the Henry Luce Foundation. Organized by Amanda Malmstrom, Assistant Curator; Kate Menconeri, Curator/Director of Exhibition & Collections; and Brooke Krancer, Class of 2022 Cole Fellow; with special thanks to Rowanne Dean, Class of 2018 Cole Fellow and Oriana Tang, Class of 2021 Cole Fellow.

SUNDAY SALONS CONTRIBUTE TO NATIONAL CONVERSATIONS

The annual “Sunday Salons,” now in their eighteenth year, were reimagined to stream live online with interactive questions from January through April 2021. The series of talks presented leading thinkers on timely topics relating to American art and landscape and contributed to national conversations during Black History Month, Women’s History Month, and Earth Day. The 2021 speakers were Jean Dunbar, Historic Interiors Expert; Elon Cook Lee, Founder, Liberation Heritage Consulting & Director of Interpretation and Education, National Trust for Historic Preservation; Nancy Siegel, Professor of Art History, Towson University & co-curator of our 2010 exhibition *Remember the Ladies*; and Judith Enck, President, Beyond Plastics &

Former EPA Regional Administrator appointed by President Obama. The Salons were offered for free as part of our Diversity, Equity and Access Initiative. In the virtual space, the Sunday Salons were attended by more guests than we can accommodate in the New Studio building, where the Salons have been held in person when conditions allow. The talks are available to stream for free at thomascollection.org/sundaysalonvideos.

The Thomas Cole National Historic Site dedicates the 2021 Sunday Salons lecture series in honor of David Grey.

Support provided by the New York State Council on the Arts with the support of the New York State Legislature, Empire State Development’s I LOVE NEW YORK program under the Market NY initiative, a Humanities New York Action Grant with support from the National Endowment for the Humanities, and the Kindred Spirits Society of the Thomas Cole National Historic Site.



Elon Cook Lee presenting “Centering Black Humanity at Historic Sites”



Judith Enck presenting “Moving Beyond Plastic Pollution”

LAND ACKNOWLEDGEMENT INSTALLED

The following land acknowledgement is a statement from the Thomas Cole National Historic Site developed in conversation with the Stockbridge Munsee Cultural Affairs Department. This season, the Land Acknowledgement was installed on the grounds at the entrance to the property.



It is with gratitude and humility that we acknowledge that we are learning, speaking and gathering on the ancestral homelands of the Muhheaconneok (or Mohican) people, who are the indigenous peoples of this land. Despite tremendous hardship in being forced from here, today their community resides in Wisconsin and is known as the Stockbridge-Munsee Community. We pay honor and respect to their ancestors past and present as we commit to building a more inclusive and equitable space for all.

COLE FELLOWS RESEARCH SHAPES THE FUTURE

In 2020 and 2021, we responded to pandemic conditions and developed a special hybrid model for the Cole Fellowship that allowed our Fellows to participate in the program through both remote and in-person opportunities. The annual Cole Fellowship offers four recent college graduates the opportunity to gain professional experience by becoming part of the museum staff. The Fellows serve on project committees, engage with the public, and conduct significant research that is immediately put into action to advance mission-based initiatives.

Isabelle (Issy) Bohling is working in arts education and developed and led the free program series “Art in the Garden.” She is researching the history of land protection in the United States and how to best enact Cole’s environmental legacy across the site today. She is also helping with research for our 2023 exhibition, curated by scholar Nancy Siegel, who curated our 2010 exhibition, *Remember the Ladies*, and TCNHS curators, Kate Menconeri and Amanda Malmstrom.

Adaeze Dikko is working on new interpretive initiatives to illuminate the lives, legacies, and circumstances of people who lived at the historic property during Cole’s residency, including Maria Cole’s sister, Frances, who spent time at the Hartford Retreat for the Insane, and a free Black woman who lived and labored on the historic property in the 1840s.

Brooke Krancer is conducting research on Cole’s painting *River in the Catskills* and the history of industry in Catskill, as well as working closely with the curatorial team on the 2022 exhibition and publication, *Thomas Cole’s Studio: Memory and Inspiration*, curated by Franklin Kelly from the National Gallery of Art. She also helped to launch the museum’s Collection Highlights online exhibition.

Oriana Tang contributed edits to wall labels and other texts now available on the Cole Site Collections webpage and on view in *Cross Pollination*. She also finalized new transcriptions of original writings by Thomas Cole, including *Verdura* and *Catskilliana*, and put together guidelines to standardize and advance the Thomas Cole Site’s future work on primary source transcriptions and publications.

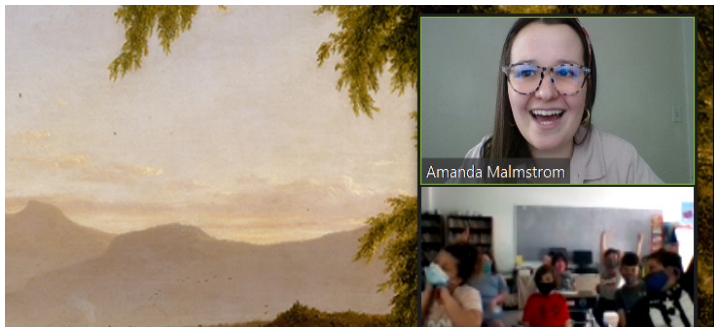


Brooke Krancer, Oriana Tang, Adaeze Dikko, Isabelle Bohling
Photo by Kate Menconeri

EDUCATION PROGRAMS SERVE STUDENTS OF ALL AGES

At the peak of the pandemic, we transitioned our annual K-12 and higher education programming into the virtual space. In 2021, the site continued to respond to student and teacher needs and provided programming both in person and live online. We welcomed Catskill Middle Schoolers, incoming Hamilton College students, and others for on-site experiences. Virtual programs included customized

programming for Hudson Elementary, Red Hook High School, and Columbia University Architecture School graduate students. We adapt our programs to serve various ages and academic interests. Our annual programming meets expressed teacher needs for engaging material to teach curriculum themes with creative lesson plans that use American art to teach American history.



Assistant Curator Amanda Malmstrom conducting an education program

MEMBERS SUPPORT FREE PROGRAMMING

Become a member of the Thomas Cole Site and join a community of compassionate people that help make possible all of our free programming, including educational programs for students. You can learn more at thomascole.org/membership or by connecting with Nichole at nburke@thomascole.org.



REMEMBERING RAY BEECHER

Raymond (Ray) Beecher was the Greene County Historian and the leader of a community campaign to save the Thomas Cole site from being lost to history twenty years ago. His advocacy, support, and bequest transformed a beloved property into the Thomas Cole National Historic Site today and protects its future.

If you have already included the historic site in your estate plans, or would like to find out how, please let us know. We cannot wait to thank you. You can reach Jennifer at jgreim@thomascole.org to start the conversation.

INTRODUCING THE MUSEUM EDUCATORS



Ava Teague



Beth Wynne



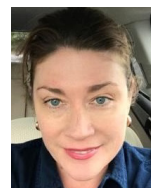
Catherine Lockhart



Jackie Woods



Lora Lee Ecobelli



Martha Bradicich



Mary Beth Soya



Michael Barraco

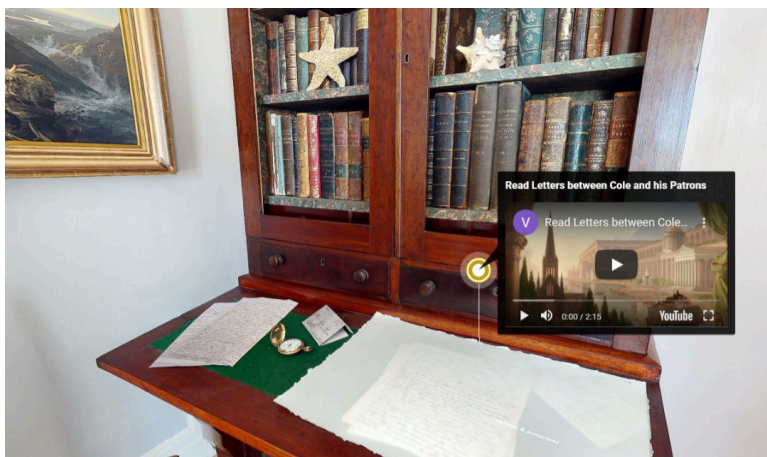


Nancy Winch

The Thomas Cole Site seasonal Museum Educators facilitate the visitor experience and support visitors in learning through conversation. The 2021 Educators are Ava Teague, Beth Wynne, Catherine Lockhart, Jackie Woods, Lora Lee Ecobelli, Martha Bradicich, Mary Beth Soya, Michael Barraco and Nancy Winch.

Ava graduated from the New School with a BA in Literary Studies. Beth graduated from SUNY New Paltz with a BA in English and minors in Studio Art and Art History. Catherine has a BA in Sociology and Peace & Global Studies, an MA in Cultural Anthropology, and a Graduate Certificate in Museum Collections Management and Care. Jackie Woods graduated from Bard College with a Master's in Secondary English and Teaching, and now teaches Secondary English at Niskayuna High School. Lora Lee is a working actress and teaches part time. Martha Bradicich previously worked in primary education. She works in the Visitor Center on site. Mary Beth graduated from the College of the Holy Cross with a BA in English and Art History. Michael graduated from Hunter College with a BA in Combined Media and has an MA in Fine Arts from Purchase College. He was previously the Director of Education at Hudson Valley MOCA and, most recently, the Director of Programs and Education at Fairfield Museum and History Center. Nancy is a Master Gardener and the go-to educator for garden-related questions.

VIRTUAL TOUR REACHES BROAD AUDIENCES



Tour Thomas Cole's historic home and 1839 Old Studio building with the updated "360 Virtual Explore." Wander through the rooms and make discoveries, including the opportunity to snoop through Cole's private letters, thanks to pop out videos, photos, and research. Learn about Cole's relationship with his patrons and his passionate concern for the landscape. The virtual tour is available for free at thomascole.org/360explore as part of our Diversity, Equity and Access Initiative. Support provided by Art Bridges.

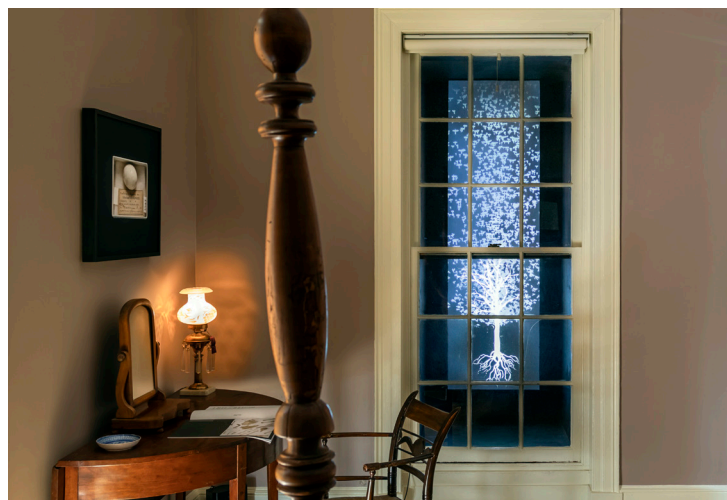
This online program was organized by Anne T. Comer, Class of 2020 Cole Fellow, and Heather Paroubek, Manager of Visitor Engagement.

featuring 25 artists and over 85 artworks installed throughout the historic interiors and outside in the landscape. *Artnet News* hailed the exhibition as “powerful, highly ambitious, and deeply relevant” and proclaimed that it wove “together the histories of conservation and American art in a way most people haven’t seen before.” In a review published in *The Magazine Antiques*, leading scholar and Yale professor Tim Barringer observed that, “*Cross Pollination* is an enterprising endeavor that makes for a thrilling visit to the region, filled with insights running back and forth between past and present” and *Sculpture Magazine* included the show in its round-up of this year’s best outdoor sculpture exhibitions.

The 19th-century artists featured in the exhibition were Martin Johnson Heade, Thomas Cole, Frederic Church, Emily Cole, and Isabel Charlotte Church, and the contemporary artists are Rachel Berwick, Nick Cave, Mark Dion, Richard Estes, Juan Fontanive, Jeffrey Gibson, Paula Hayes, Patrick Jacobs, Maya Lin, Flora C. Mace, Vik Muniz, Portia Munson, Lisa Sanditz, Emily Sartor, Sayler/Morris, Dana Sherwood, Jean Shin, Rachel Sussman, and Jeff Whetstone.

Taking flight from Martin Johnson Heade’s influential series of hummingbird and habitat paintings, *The Gems of Brazil*, (1863-64,) the project brought together historic paintings, sketches, sculpture and natural history specimens with new contemporary artworks.

Cross Pollination was curated by Kate Menconeri, Curator & Director of Exhibitions and Collections at the Thomas Cole National Historic Site; Julia B. Rosenbaum, Associate Professor of Art History and Visual Culture, Bard College and former Director of Research and Publications at The Olana Partnership; William L. Coleman, Director of Collections &



Installation of Sayler/Morris' artwork *Eclipse*

© Peter Aaron/OTTO

Exhibitions at The Olana Partnership; and Mindy N. Besaw, Curator, American Art and Director of Fellowships and Research, Crystal Bridges Museum of American Art. *Cross Pollination* was developed collaboratively between the partner museums and in conversations with leading American artists, scholars, scientists, and historians.

The exhibition was accompanied by an exhibition catalogue available in our online shop and an audio guide featuring the artists and curators at hudsonriverskywalk.org/crosspollination.

The exhibition was created by the Thomas Cole National Historic Site, The Olana Partnership at Olana State Historic Site, and Crystal Bridges Museum of American Art, Bentonville, Arkansas. The exhibition tour is organized by Crystal Bridges.

Support for this exhibition and its national tour is provided by Art Bridges. Additional major support is provided by the Henry Luce Foundation. Made possible through support from the Terra Foundation for American Art. The exhibition is supported in New York in part by The National Endowment for the Arts, Empire State Development's I LOVE NEW YORK program under the Market NY initiative, New York State Office of Parks, Recreation and Historic Preservation, the New York State Council on the Arts with the support of the Office of the Governor and the New York State Legislature; Robert Lehman Foundation; The Bank of Greene County Charitable Foundation; Greene County Legislature through the County Initiative Program of the Greene County Council on the Arts; The Olana Partnership's Novak-Ferber Exhibitions Fund, the Kindred Spirits Society of the Thomas Cole National Historic Site, Charina Foundation, The Stainman Family Foundation, Anne Miller & Stuart Breslow, Kristin Gamble, and Deedee & Barrie Wigmore. Support for the catalogue is provided by Furthermore: a program of the J. M. Kaplan Fund.

National Medal Finalist continued from page 1

The Brooklyn Rail summed up the dramatic transformation of the historic site over the last twenty years in a recent article by the scholar and curator Jason Rosenfeld: “the Thomas Cole site has been triumphantly transformed: the original wall colors and dadoes of the early-19th century farmhouse have been revealed and restored, new exhibits both digital and analog have been introduced, Cole’s final studio has been rebuilt and serves now as a state-of-the-art exhibition space. The house and grounds look splendid.”



Martin Johnson Heade, *Hooded Visorbearer* (detail), c. 1863-1864, Oil on canvas, 12³/₄ x 10 in., *The Gems of Brazil*, Crystal Bridges Museum of American Art, Bentonville, Arkansas

CROSS POLLINATION BEYOND THE GALLERIES

The exhibition was accompanied by a series of dynamic programs:



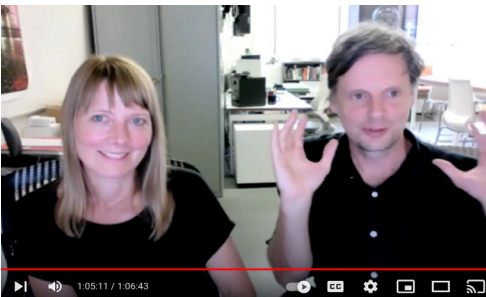
The Thomas Cole Site and Olana hosted the first “**Great Pollinator Ramble**” in June with Processional Arts Workshop. Giant pollinator puppets soared through the streets of Catskill and “migrated” to the Thomas Cole Site. Community members gave life to these giant works of art and children created their own flower puppets to join in the fun. Support provided by Art Bridges.



The Thomas Cole Site collaborated with Olana and Basilica Hudson to present a screening of **WasteLand at the local Greenville Drive-In**. *WasteLand* is a documentary that follows the *Cross Pollination* exhibition artist Vik Muniz to Brazil, where he explores the social ecosystem of workers at the world’s largest garbage dump.



The Hudson Eye worked with the Thomas Cole Site, Olana, and the New York State Bridge Authority to activate the Hudson River Skywalk with a new art installation entitled, ***The Spirits are Laughing*** by the acclaimed artist Jeffrey Gibson.



The Thomas Cole Site and Olana presented a **series of virtual talks** bringing together artists, ecologists and history scholars. The talks were held throughout the five month run of the exhibition and featured Paula Hayes, Chris Layman, Lisa Sanditz, Susannah Sayler & Edward Morris (pictured here), Dr. Scott Manning Stevens, and Rachel Sussman. The series was organized by Amanda Malmstrom, Assistant Curator at the Thomas Cole Site, and Carolyn Keogh, Director of Education and Public Programs at The Olana Partnership.



Cole Fellow Isabelle Bohling developed free immersive workshops at the intersection of art and nature that were offered on the grounds of the Thomas Cole Site. The “**Art in the Garden**” programming was in coordination with the local farmer Rachel Stults of Brand Hollow Farm and Master Gardener Jean Campbell. The program was free, and all necessary materials were provided as part of our Diversity, Equity and Access Initiative. Support provided by Art Bridges.



Artists Lisa Sanditz and Emily Sartor created an artwork entitled, ***Thrilling Tales and Startling Adventures: An Unofficial Guide to Pollinators*** (detail pictured here). This illustrated map encouraged visitors to get out into the local landscape and identify local pollinators and plants.



The Thomas Cole Site and Olana cohosted a talk with the preeminent Martin Johnson Heade scholar, **Theodore E. Stebbins Jr.** In the talk entitled, “Martin Johnson Heade: A Strange Art Life Brought up to Date,” Dr. Stebbins provided a new look at the nineteenth-century artist that inspired the *Cross Pollination* exhibition.

“SPRING LIGHTS” BROUGHT OUT THE COMMUNITY

The Thomas Cole Site launched a new program this year called “Spring Lights,” activating the historic gardens and grounds after dark. In April and May 2021, “Spring Lights” offered visitors a safe outdoor walk-through experience inspired by Cole’s love of nature, and we invited local residents every week for Free Community Fridays. A field of lights designed by Chris Bochiarro and Megan Kinneen of Clerestory Light appeared to dance around visitors. The experience included an original soundscape by Greg Hanson, the sound designer for *Sleep No More* in NYC. The audio featured Cole’s original writings given voice by the film actor Jamie Bell. The contemporary artist Brian Kenny created a new animated artwork inspired by Cole’s paintings that was projected across the entire side of the historic Old Studio building.

The *Times Union* reported: “created with 450 glowing orbs, the immersive installation conjures up a magical space filled with life and warmth” and hailed Brian Kenny’s artwork as “a kaleidoscopic animation of color and imagery that evokes the depth and richness of Cole’s canvases.” In an interview with the *Daily Freeman*, Executive Director Betsy Jacks said “we wanted to create something that could be experienced outdoors and that’s really accessible to everybody.” *ABC News 10* covered the new experience in the region and observed that, “For 20 years, the Thomas Cole National Historic Site has been sharing the beauty of the painter’s home and studio with the community” and “This spring, people are welcome to enjoy a new community event called Spring Lights.”

“Spring Lights” was made possible by a generous grant from **The Bay & Paul Foundations** in support of using light to inspire new experiences.

Community benefits, including Free Community Fridays, were made possible by our generous Underwriters

COMMUNITY UNDERWRITER

Lisa Fox Martin

ELEMENTARY STUDENTS UNDERWRITER

Nina Matis & Alan Gosule
Anne Miller & Stuart Breslow
Susan G. A. Warner

HIGH SCHOOL STUDENTS UNDERWRITER

Gary DiMauro Real Estate Inc.

SUSTAINABILITY UNDERWRITER

Betsy & Al Scott
Warner Shook & Frank Swim
Maynard & Kay Toll

LUMINARY UNDERWRITER

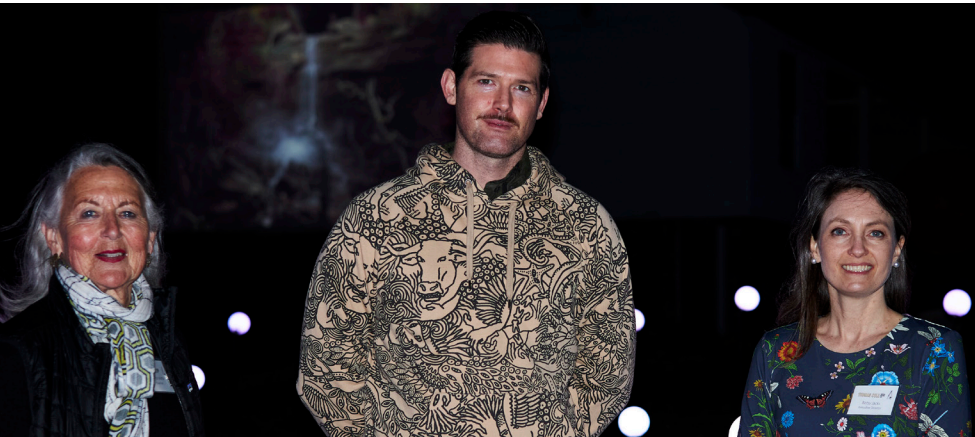
Susan Ball & John Brigham
Sara & Tom de Swardt
Foreland Catskill
Alison Lankenau
National Bank of Coxsackie
Robin A. Staplely, LMT

FRIEND

335 Main Street LLC
Jimmy & Micaela Bulich
Stephen & Jacqueline Dunn
Ginnie Gardiner
Linda & Tom Gentalen
Guy Griggs & Greg Ventra
Joan & David Grubin
Robert Palmer
Susan H. Perkins
Pro Printers
Nancey Rosensweig & Dan Arshack
Edward Rothfarb & Thomas McManus
Stephen Shadley
Hudson Talbott & Jay Lesenger

Special thanks to Brian Swardstrom

“Spring Lights” was created by Clerestory Light, the artist Brian Kenny, and the voice of film actor Jamie Bell



Lisa Fox Martin, Brian Kenny, and Betsy Jacks

Photo by Adam T. Deen



Clerestory Light Creative Team



Photo by Stan Lichens



The Pollinator Pavilion by Mark Dion and Dana Sherwood



Vahap Avsar, Guy Griggs, and Greg Ventra

Photo by Adam T. Deen



© Peter Aaron/OTTO



Duncan May

SUMMER PARTY CELEBRATES ANNIVERSARY

Thank you for making the 20th Anniversary Summer Party a night for the history books. We are so grateful for the community behind this historic place. Lisa Fox Martin, our magnificent chairman and party host, wondered if she had ever seen so many smiles in one place. It was a joyful and exuberant evening! We were thrilled with the enthusiastic response for commemorating this major anniversary milestone. Remarks by Senator Schumer and Representative Antonio Delgado were screened at the event. Thanks to supporters like you, the Thomas Cole Site has come a long way in twenty years. A very special thank you to Geoff Howell and Geoff Howell Studio for designing the beautiful celebration, which took place in Catskill on the banks of the Hudson River.

ANNIVERSARY TABLE

Jimmy & Micaela Bulich
Matthew & Amy Davidson
Lisa Fox Martin
Gloria & Barry Garfinkel
James LaForce & Stephen Henderson
Marianne Lockwood & David Bury
Rick Sharp & Meredith Kane

PATRON OF THE ARTS TABLE

Sara & Tom de Swardt
David Forer
Alison Lankenau
Merritt M. Lutz
Nina Matis & Alan Gosule
Anne Miller & Stuart Breslow
Hudson Talbott & Jay Lesenger
Susan G. A. Warner

PLATINUM SPONSOR TABLE

Susan Ball & John Brigham
Gary DiMauro Real Estate, Inc.
Stephen & Jacqueline Dunn
MaryEllen Gallagher & Frank Cuthbert
Kristin Gamble
Linda & Tom Gentalen
Guy Griggs & Greg Ventra
Jean Hamilton & Richard McCarthy
Nicholas Haylett & Timothy Husband
James Joseph & Scott Frankel
Nancy Kyle & Jack Fraser
Patti Matheney & Michael Schrom
John Schobel & Daniel Schmeder
Betsy & Al Scott
Stephen Shadley & Carrie Feder
Warner Shook & Frank Swim
Lois & Arthur Stainman
Robin Ann Stapley LMT
Evelyn Trebilcock & Douglas Hammond

ANNIVERSARY TREE

Ann Artschwager
Ed Beaty & Tommy Ngo
Jimmy & Micaela Bulich
Doreen Davis
Lois Deimel Whealey

Carlee & Michael J. Drummer
Diane & Carlos Dunn
Linda S. Ferber & Joel Berson
Laura Grey
Lisa Fox Martin
Kusum Gaind & Rupri Puri
Barbara Hancock & Eugene Zuckoff
Barbara Kenner
Pamela King-Belfor
Nancy Kyle & Jack Fraser
Merritt M. Lutz
Edwina Thorn
The Stewart House
Robin & Martin Smith
Frances Spark & Michel Goldberg
Robin Ann Stapley LMT
Illiana van Meeteren & Terence Boylan
Chris Warsaw

CONTRIBUTORS

Richard & Jean Bassin
Annette & Stanley Blaugrund
Kathleen & Neil Chrisman
Margaret Davidson & John Stein
Ginnie Gardiner
Gail Gregg & Daniel Moses Schreier
Joan & David Grubin
Jim Guidera & Edward Parran
John Haworth & Howard Rubenstein
Floyd Lattin & Ward Mintz
Guido A. Loyola & Leonard A. Herman
Peter O’Hara & John Garofalo
Mark Prezorski & Owen Davidson
Nancey Rosensweig & Dan Arshack
P.J. Shelley & Patricia Pindar
Kenneth E. Silver
David Slutzky
Kiki Smith & Zoran Skoko
Peter Spears & Brian Swardstrom
Colin & Katrina Stair
Harvey & Mary Struthers
Liza Todd Tivey
Maynard & Kay Toll
Nancy Ursprung
Alan Wallach & Phyllis Rosenzweig
Wheelock Whitney & Sandro Cagnin



Lisa Fox Martin and Betsy Jacks



Projected remarks from Senator Schumer

Event Design Geoff Howell
Dinner & hors d’oeuvres Creekside Catering
Event cocktails Domaney’s Liquors & Fine Wines,
Great Barrington, MA
Auctioneer Charles Antin
Restrooms by Stone Industries
Tent by Cantele Tent Rentals
Fireworks by Fireworks Extravaganza



Geoff Howell



Ed Parran, Kristin Gamble, and Jim Guidera



Sven and Barbara Huseby



The Thomas Cole Site Board of Trustees



Stef Halmos and Julia Weist



Margaret Davidson, John Stein, and Matt Davidson



Arthur and Lois Stainman



Suzy and Bill Vogler, Barry and Gloria Garfinkel, and their guests



Photos by Adam T. Deen

BOARD OF TRUSTEES

Lisa Fox Martin Chairman	Jimmy Bulch Carrie Feder
Marianne Lockwood Vice Chairman	Linda Gentalen Guy Griggs
Warner Shook Vice Chairman	Nina Matis Anne J. Miller
Sara de Swardt Treasurer	Stephen Shadley Kenneth E. Silver
Susan Ball Secretary	Hudson Talbott Evelyn Trebilcock
Elizabeth B. Jacks Executive Director	Susan G. A. Warner

STAFF

Elizabeth B. Jacks, Executive Director
Matthew Alexander, Facilities Manager
Nichole Burke, Development Tech. Mgr.
Jean Campbell, Gardener
Heather Christensen, Ed. Coord.
Margaret DiStefano, Mktg. & V.S. Coord.
Jessica Goon, Events & Comm. Coord.
Jennifer Greim, Associate Director
Traci Horgen, Chief Operating Officer
Amanda Malmstrom, Assistant Curator
Kate Menconeri, Dir. of Ex. & Coll./ Cur.
Peter & Tone Noci, Caretakers
Eugene O'Brien, Bookkeeper
Reed Parker, Grounds & Maint. Asst.
Heather Paroubek, Mgr. of Vis. Engage
Rachel Stults, Visitor Center Manager

CLASS OF 2021 COLE FELLOWS

Isabelle Bohling	Brooke Krancer
Adaaze Dikko	Oriana Tang

NATIONAL COUNCIL

Kevin J. Avery
Tim Barringer
Annette Blaugrund
Linda S. Ferber
Ella M. Foshay
Eleanor Jones Harvey
Patricia Junker
Elizabeth Kornhauser
Katherine Manthorne
Mark D. Mitchell
Barbara Novak
Paul D. Schweizer
Nancy Siegel
John R. Stilgoe
Alan Wallach

TRUSTEES EMERITUS

Stephen Dunn
Michel Goldberg
Sybil Tannenbaum
Maynard Toll
Jack Van Loan

THOMAS COLE

NATIONAL
HISTORIC
SITE

Thomas Cole Historic House
218 Spring Street Catskill, NY 12414
518.943.7465 · thomascole.org

NONPROFIT
ORGANIZATION
U.S. POSTAGE PAID
NEWBURGH, NY 12550
PERMIT NO. 8604



Thomas Cole, *Landscape with Clouds* (detail), c. 1846-1847, Oil on Canvas, Private Collection

UPCOMING EXHIBITIONS: ON MEMORIAL AND INSPIRATION

The Thomas Cole Site has organized two major exhibitions for 2022. Franklin Kelly, the Christiane Ellis Valone Curator of American Paintings, National Gallery of Art, will curate our exhibition, *Thomas Cole's Studio: Memory and Inspiration*, presented in the artist's New Studio in Catskill from April 30th through October. The project will reveal new research by Dr. Kelly on Cole's late work and its influence on the next generation of artists and the course of American art. The exhibition will travel to the Albuquerque Museum, Albuquerque, NM.

MASS MoCA and the Thomas Cole Site are partnering to present concurrent exhibitions by the contemporary artist Marc Swanson. The project entitled, *Marc Swanson: A Memorial to Ice at the Dead Deer Disco*, will be installed in Cole's historic home and open in July. Swanson is inspired by Cole's writing about preserving the natural environment. Denise Markonish, the curator at MASS MoCA who is working with Cole Site curator Kate Menconeri, poignantly describes the project as "a longing for the present, and future nostalgia, resulting from the impending loss and inevitable results of climate change."

® I LOVE NEW YORK is a registered trademark and service mark of the New York State Department of Economic Development; used with permission.