



The Olana Partnership, Director of Advancement and Marketing
Melanie Hasbrook, mhasbrook@olana.org

Thomas Cole National Historic Site, Associate Director
Jennifer Greim, JGreim@thomascole.org

Crystal Bridges Museum of American Art, Public Relations Director
Beth Bobbitt, Beth.Bobbitt@crystalbridges.org

Four-State Initiative Launches Major Exhibition “Cross Pollination: Heade, Cole, Church, and Our Contemporary Moment” – Exploring Cross Pollination in Art and Nature from 19th Century to Today

Thomas Cole National Historic Site in New York, The Olana Partnership at Olana State Historic Site in New York, and Crystal Bridges Museum of American Art in Arkansas Announce their Collaborative Exhibition and Multiple Events Coinciding with the Opening at the Cummer Museum of Art & Gardens in Jacksonville, FL, Followed by Reynolda House Museum of American Art in Winston-Salem, NC

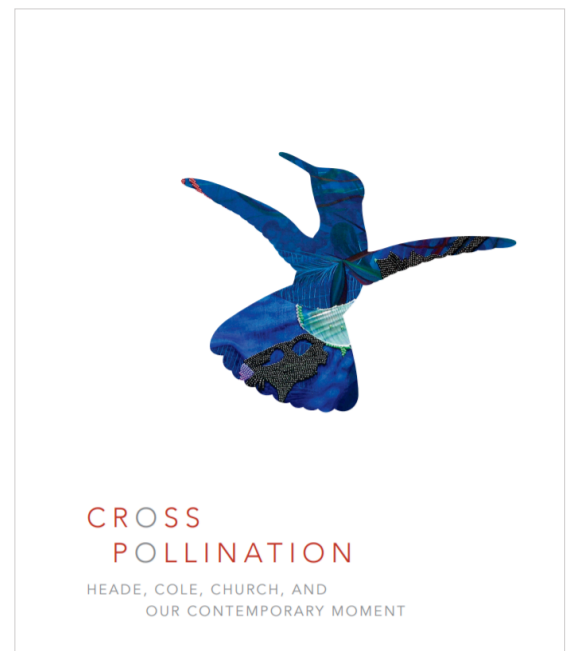
The Exhibition and Accompanying Book Feature Artist Martin Johnson Heade’s 19th-Century Series of Hummingbird and Habitat Paintings, *The Gems of Brazil*, Related Rarely Seen Paintings by Hudson River School Artists Thomas Cole and Frederic Church and Their Daughters Emily and Isabel, and Major Related Works by Leading Contemporary Artists

Hudson & Catskill, NY and Bentonville, AR – October 22, 2020

– The Thomas Cole National Historic Site, Olana, and Crystal Bridges Museum of Art announced today a four-state initiative to launch the major exhibition “Cross Pollination: Heade, Cole, Church, and Our Contemporary Moment,” which will open on October 28 at the Cummer Museum of Art & Gardens in Jacksonville, FL, before continuing its national tour to the Reynolda House Museum of American Art in Winston-Salem, NC, and the three organizing institutions. The exhibition explores the theme of cross pollination in art and the environment from the 19th century to today. It was created by The Olana Partnership at Olana State Historic Site in Hudson, NY, Thomas Cole National Historic Site in Catskill, NY, and Crystal Bridges Museum of American Art in Bentonville, Arkansas.

Opening activities include the following:

- Opening night virtual events on October 27, 28 and 29 with the exhibition’s curators – from the three organizing institutions as well as Bard College – hosted by the [Cummer Museum](#);
- The launch of a companion book, also titled “Cross



Book Cover: *Cross Pollination: Heade, Cole Church, and Our Contemporary Moment*; Published by Thomas Cole National Historic Site and The Olana Partnership, 2020

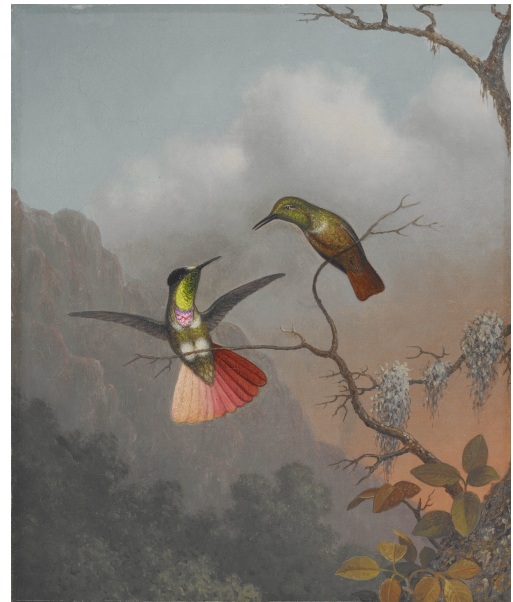
Pollination: Heade, Cole, Church, and Our Contemporary Moment,” illuminating cross pollination through curatorial essays and full-color images;

- The major exhibition artwork, *The Pollinator Pavilion*, by acclaimed artists Mark Dion and Dana Sherwood that is now open at the Thomas Cole National Historic Site and featured in the exhibition and publication;
- An interactive online experience created by Crystal Bridges Museum of American Art that enables individuals to follow Martin Johnson Heade on his journey to Brazil to view hummingbirds in their natural habitat – and to make their own paintings inspired by Heade.
- The opportunity to enjoy a socially distanced excursion in the Hudson River Valley by visiting *The Pollinator Pavilion* at the Thomas Cole Site, walking across the Hudson River Skywalk on the Rip Van Winkle Bridge to Olana, and cherishing its stunning 250-acre landscape and home designed by Frederic Church with unrivaled panoramic views of the Hudson Valley and Catskill Mountains.

The exhibition stems from the artist Martin Johnson Heade’s 19th-century series of hummingbird and habitat paintings, *The Gems of Brazil*, and their unique relationship to the epic landscapes of Hudson River School artists Thomas Cole (1801-1848) and Frederic Church (1826-1900), as well as their continued significance to major contemporary artists working today. For the first time in over two decades, 16 paintings from the influential series, *The Gems of Brazil* (1863-64), by Martin Johnson Heade (1819-1904) will be on tour for public audiences.

The project uses the metaphor of “cross pollination” inspired by Heade’s paintings to explore interconnections in art and science, between artists, and across the 19th and 21st centuries. Paintings, sketches, sculpture, and natural history specimens will be displayed in provocative juxtapositions. The artists featured in the exhibition are

Martin Johnson Heade, Thomas Cole, Frederic Church, Emily Cole, Isabel Charlotte Church, Rachel Berwick, Nick Cave, Mark Dion, Richard Estes, Juan Fontanive, Jeffrey Gibson, Paula Hayes, Patrick Jacobs, Maya Lin, Flora C. Mace, Vik Muniz, Portia Munson, Roxy Paine, Lisa Sanditz, Sayler/Morris, Dana Sherwood, Rachel Sussman, and Jeff Whetstone.



Martin Johnson Heade, *Hooded Visorbearer*, ca. 1863-64, Oil on Canvas, Crystal Bridges Museum of American Art, Bentonville, AR; 2006.93. Photograph by Dwight Primiano.

The opening of the exhibition begins a national tour organized by Crystal Bridges Museum of American Art. The schedule is: Cummer Museum of Art & Gardens, Jacksonville, FL (October 28, 2020 – January 17, 2021), Reynolda House Museum of American Art, Winston-Salem, NC (February 19 – May 23, 2021), Thomas Cole National Historic Site & Olana State Historic Site, Catskill and Hudson, NY (June 12 – October 31, 2021), and Crystal Bridges Museum of American Art (November 20, 2021 – March 23, 2022).



The exhibition opening coincides with the publication of the companion book by the same name – “Cross Pollination: Heade, Cole, Church, and Our Contemporary Moment.” The 63-page full-color book features new original essays by the exhibition curators and artwork by the foremost contemporary artists participating in the exhibition. The book is published by the Thomas Cole National Historic Site and Olana State Historic Site and includes original essays by the exhibition curators: **Kate Menconeri**, Curator & Director of Exhibitions and Collections at the Thomas Cole National Historic Site; **Julia B. Rosenbaum**, Associate Professor and Chair of Art History & Visual Culture, Bard College, and former Director of Research & Publications at The Olana Partnership; **Mindy N. Besaw**, Curator of American Art & Director of Fellowships and Research at Crystal Bridges Museum of American Art, and **William L. Coleman**, Director of Collections & Exhibitions at The Olana Partnership.

The book is available for \$14.95 in the gift shops of the Thomas Cole Site, Olana, Crystal Bridges Museum, and Cummer Museum – and on their websites.

The exhibition curators from Thomas Cole, Olana and Crystal Bridges are participating virtually in three nights of opening events at the Cummer Museum of Art & Gardens. The curators will share their insights and reflect on how the exhibition and book developed collaboratively between the partner museums and in conversations with leading American artists, scholars, scientists, and historians. They will be joined by Cummer Museum officials including Pam Paul, Chair of the Board of Trustees; Kerrie Slattery, Interim Director, and Holly Keris, Delores Barr and J. Wayne Weaver Chief Curator.

The Pollinator Pavilion, a major artwork by Mark Dion and Dana Sherwood featured in the exhibition and publication, is now open at the Thomas Cole National Historic Site in advance for the exhibition’s arrival at the Thomas Cole Site and Olana in June of 2021. Inspired by *The Gems of Brazil* and designed specifically for the Thomas Cole Site, it is a 21½-foot-high, painted wood, architectural confection draped with flowers, plants, and paintings by the artists, designed as much for hummingbirds as for people. Created to attract pollinators and humans to share the same space – with seating for one human guest at a time – the pavilion creates a radical decontextualization in which individuals can see themselves as part of nature and understand their own capacity to foster an environment of ecological balance.

The [interactive online experience](#) created by Crystal Bridges Museum of American Art enables individuals to embark on their own journey of drawing or painting hummingbirds inspired by Martin Johnson Heade’s travels to Brazil in the 1860s. It presents images of Heade’s paintings and incorporates 21st-century technology to engage children and adults in making their own art inspired, as so many artists have been, by Heade and *The Gems of Brazil*.



The Pollinator Pavilion at the Thomas Cole National Historic Site, Catskill, NY
Photo © Peter Aaron/OTTO



Art lovers living in or traveling to New York's Hudson River Valley this fall can visit the Thomas Cole National Historic Site and Olana, the homes of Thomas Cole and Frederic Church. The two sites are just two miles apart on either side of the Hudson River and are connected by the Hudson River Skywalk, a pedestrian walkway on the Rip Van Winkle Bridge, with stunning views of the Hudson River Valley and the Great Northern Catskills. Both sites are offering in-person programming now. Visitor information for both sites is shown below. All tour and program participants are required to wear a mask covering the mouth and nose and maintain social distance (six feet) at all times. Please be aware that the Olana and Thomas Cole sites are public parks and follow protocols laid out by New York State.

Support for the exhibition and its national tour is provided by Art Bridges. Additional major support is provided by the Henry Luce Foundation.

The exhibition is also supported by the Terra Foundation for American Art. In New York, the project is supported in part by The National Endowment for the Arts; Empire State Development's I LOVE NY program through the Market New York initiative; and the New York State Council on the Arts, with the support of Governor Andrew M. Cuomo, and the New York State Legislature.

In New York, the project is also supported by the Robert Lehman Foundation; The Bank of Greene County Charitable Foundation; the Greene County Legislature through the County Initiative Program of the Greene County Council on the Arts; The Olana Partnership's Novak-Ferber Exhibitions Fund; and the Kindred Spirits Society of the Thomas Cole National Historic Site.

Support for the book is provided by Furthermore, a program of the J. M. Kaplan Fund.

###



OLANA STATE HISTORIC SITE AND THE OLANA PARTNERSHIP: Olana is the greatest masterpiece of Frederic Edwin Church (1826-1900), a preeminent American artist of the mid-19th century and the most important artist's home, studio, and designed landscape in the United States. Church designed Olana as a holistic environment integrating his advanced ideas about art, architecture, landscape design, and environmental conservation. Olana's 250-acre artist-designed landscape with five miles of carriage roads and a Persian-inspired house embraces unrivaled panoramic views of the Hudson Valley and Catskill Mountains and welcomes more than 170,000 visitors annually. The house is open for guided tours, and reservations are highly recommended. The landscape is free and open to all daily 8:30 AM-sunset. Olana State Historic Site, administered by the New York State Office of Parks, Recreation and Historic Preservation, is a designated National Historic Landmark and one of the most visited historic sites in the state. The Olana Partnership, a private not-for-profit education corporation, works cooperatively with New York State to support the restoration, conservation, and interpretation of Olana. The Olana Partnership operates Olana State Historic Site in a cooperative agreement with New York State Parks.

THE THOMAS COLE NATIONAL HISTORIC SITE is an international destination presenting the original home and studios of Thomas Cole (1801-1848), founder of the Hudson River School of painting, the nation's first major art movement. Located on 6 acres in the Hudson Valley, the site includes the 1815 Main House; Cole's 1839 Old Studio; the reconstructed New Studio building; and panoramic views of the Catskill Mountains. It is a National Historic Landmark and an affiliated area of the National Park System. The Thomas Cole Site's activities include guided tours, special exhibitions of both 19th-century and contemporary art, printed publications, extensive online programs, activities for school groups, free community events, lectures, and innovative public programs such as the Hudson River School Art Trail—a map and website that enable visitors to visit the places that Cole painted. The goal of all programs at the Thomas Cole Site is to enable visitors to find meaning and inspiration in Thomas Cole's life and work. The themes that Cole explored in his art and writings—such as landscape preservation, the need for public art museums, and our conception of nature as a restorative power—are historic and timely, providing the opportunity to connect to audiences with insights that are highly relevant to their own lives.

CRYSTAL BRIDGES MUSEUM OF AMERICAN ART

The mission of Crystal Bridges Museum of American Art is to welcome all to celebrate the American spirit in a setting that unites the power of art with the beauty of nature. Since opening in 2011, the museum has welcomed 4.9 million visitors, with no cost for admission. The collection spans five centuries of American masterworks from colonial to current day and is enhanced by temporary exhibitions. The museum is nestled on 120 acres of Ozark landscape and was designed by world-renowned architect Moshe Safdie. A rare Frank Lloyd Wright-designed house was preserved and relocated to the museum grounds in 2015. Crystal Bridges offers public programs including lectures, performances, classes, and teacher development opportunities. Some 265,000 school children have participated in the Willard and Pat Walker School Visit program, which provides educational experiences for school groups at no cost to the schools. Additional museum amenities include a restaurant, gift store, library, and 5 miles of art and walking trails. For more information, visit CrystalBridges.org.



Olana VISITOR INFORMATION: The landscape is free and open daily 8:30 am to sunset. For a current list of tours of OLANA, visit www.olana.org/hours-and-admission. Keep in touch on Facebook, Instagram and Twitter at [@OlanaSHS](https://twitter.com/OlanaSHS).

Thomas Cole VISITOR INFORMATION: Visit thomascole.org/events for outdoor guided tours and other extensive programming available now. The grounds are open daily from dawn to dusk. Keep in touch on Facebook, Instagram and Twitter at [@thomascolesite](https://twitter.com/thomascolesite).

Crystal Bridges VISITOR INFORMATION: for updates, [visit here](#) and follow on Facebook, Instagram, Twitter.

[#CrossPollinationShow](#)



® I LOVE NEW YORK is a registered trademark and service mark of the New York State Department of Economic Development; used with permission.